

IMPORTANT: PLEASE RETAIN THIS INSTRUCTION MANUAL FOR FUTURE REFERENCE



2010 Hyundai Tucson GLS and Limited Mesh Grille Installation Instructions

E 12 H0 P

Notes to the Technician:

E&G is proud to present this package to you and reminds you that for technical information, contact Lynn Eash or Lee Clary at 410-381-4900. Do not attempt installation any E&G product without first reading the detailed instructions. E&G Classics will not warrant damaged parts or vehicle due to altered installation instructions.

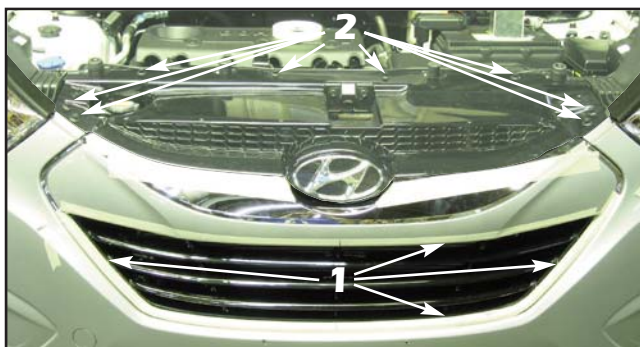
Copyright © 2010 by E&G Classics, Inc.

All right reserved. The reproduction or utilization of this work in any form or any electronic, mechanical, or other means, no known or hereafter invented, including xerography, photocopying, and recording, and in any information storage retrieval system is forbidden without written permission of owners.

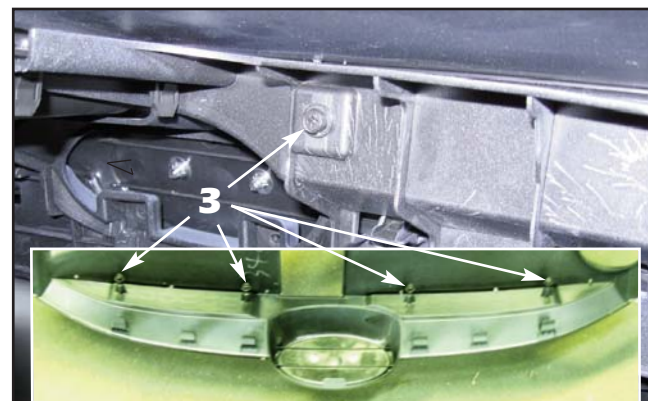


GLS Mesh Grille Part # 1346-0102-10

Quantity	Description	Part No.
1	Upper Mesh Grille Surround	1346-0034-10
2	Upper Mesh Sections	1346-0020-10
1	Lower Stainless Steel Surround	1346-0022-10
1	Lower Stainless Steel Fine Mesh Insert	1346-0021-10
1	Hardware Kit (components listed below)	1346-1902-10
	(8) 1.006" x .189" x .064" Plastic Washers	1999-0264-00
	(2) Outer Mounting Brackets	1091-0157-03R
	(6) #8 x 3/8" Black Truss Head Screws	1999-9574-00
	(48") .045 x .250" Double Faced Tape	3004-9250-92
	(10) #8-32 ESNA Half Nuts	1999-0065-00



1. Open the hood and carefully apply several layers of masking tape to the painted upper and lower grille openings (around the upper factory grille). This will protect the painted surfaces during grille installation.
2. Remove the factory push fasteners from across the top of the grille and the 2 (two) 10 mm hex bolts securing the top of the bumper cover.



3. Pull forward on the bumper cover and remove the four (4) factory phillips screws retaining the inside edge of the grille to the bumper cover (Limited grille shown removed so you can locate the screws, GLS grille similar).

Limited Mesh Grille Part # 1347-0102-10

Quantity	Description	Part No.
1	Upper Mesh Grille Surround	1347-0034-10
2	Upper Mesh Sections	1347-0020-10
1	Lower Stainless Steel Surround	1347-0022-10
1	Lower Stainless Steel Fine Mesh Insert	1347-0021-10
1	Hardware Kit (components listed below)	1347-1902-10
	(9) 1.006" x .189" x .064" Plastic Washers	1999-0264-00
	(1) Lower Grille Center Mounting Bracket	1347-0158-10
	(6) #8 x 3/8" Black Truss Head Screws	1999-9574-00
	(48") .045 x .250" Double Faced Tape	3004-9250-92
	(10) #8-32 ESNA Half Nuts	1999-0065-00

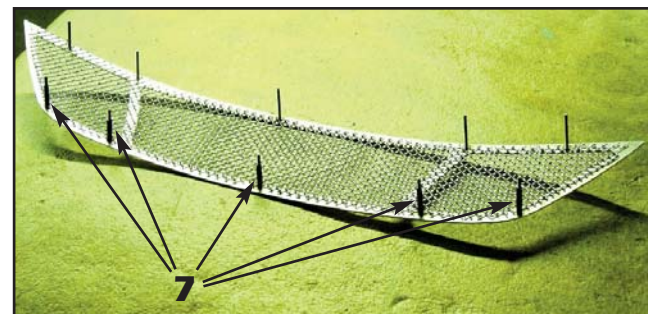


4. Once all the push fasteners and phillips screws have been removed, pull the grille forward to remove it from the bumper cover.



5. Once the upper grille is removed, you have access for the lower mesh grille installation.
6. On vehicles equipped, remove the front license plate bracket (to be reinstalled).

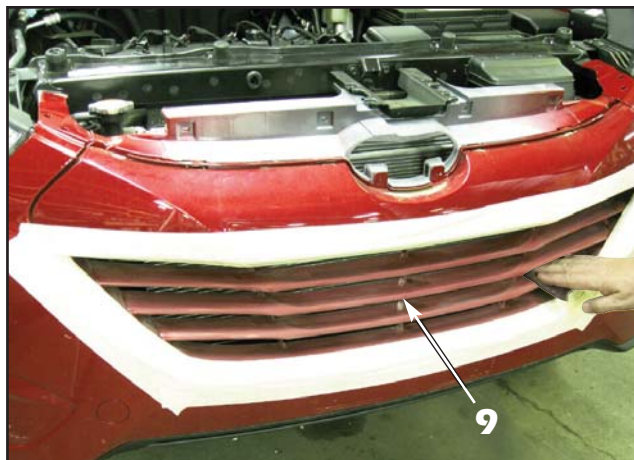
IMPORTANT!
The exposed edges of the stainless steel grille and mesh can be extremely sharp. Please handle with care.



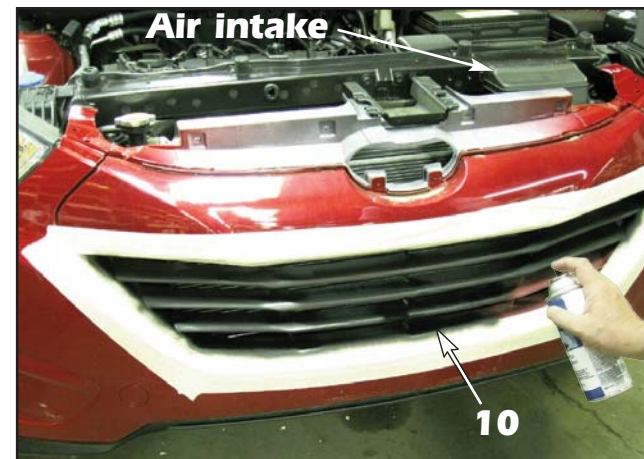
7. Align the lower mesh section over the surround and trim the closed ends from the installed black cap plugs and push them down over the lower five (5) mounting studs.



8. **For GLS models:** Carefully align the lower grille surround into place, then mark around the perimeter of the surround with a grease pencil. Once the outline has been marked onto the factory grille, remove the surround.



9. **For GLS models:** Tape up the factory lower painted grille where the grease pencil marks are and use a scotch brite pad to scuff the paint to break the gloss.



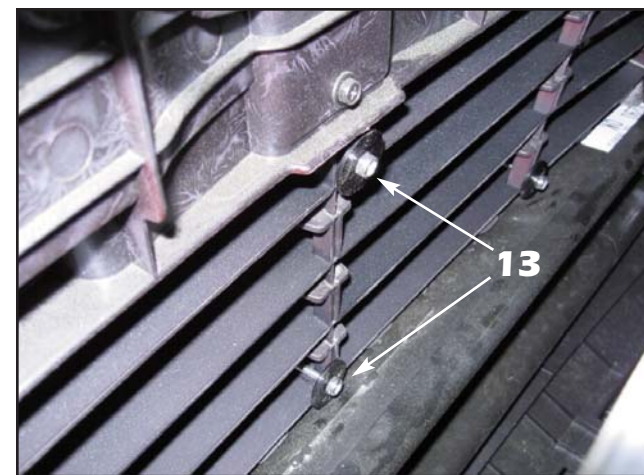
10. **For GLS models:** Apply flat or semi-gloss black paint to the factory lower grille horizontal and vertical bars and allow to dry.
Shop Tip: For more room during the installation of the lower grille, remove the three plastic push pins (press in on the center to release) securing the air intake and remove it from the core support (GLS shown, Limited shown in next photo).



11. Install the **lower grille section** first, accessing the mounting hardware from the top.



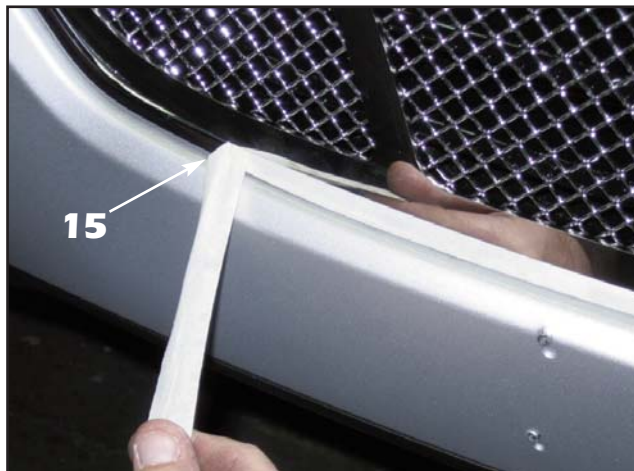
12. **For Limited models:** The 90 degree bent mounting bracket will install over the top center stud and the **black plastic washers** install on the remaining studs. Snug the **#8-32 ESNA half nuts** but do not overtighten as you will indent the lower grille frame where the studs are located.



13. **For GLS models:** A **black plastic washer** will install over the top center stud and all studs except the upper outer ones. Snug the **#8-32 ESNA half nuts** but do not overtighten as you will indent the **lower grille surround** where the studs are located.



14. For GLS models: The supplied **mounting brackets** will install over the top outer studs. Snug the **#8-32 ESNA half nuts** but do not overtighten as you will indent the **lower grille surround** where the studs are located.



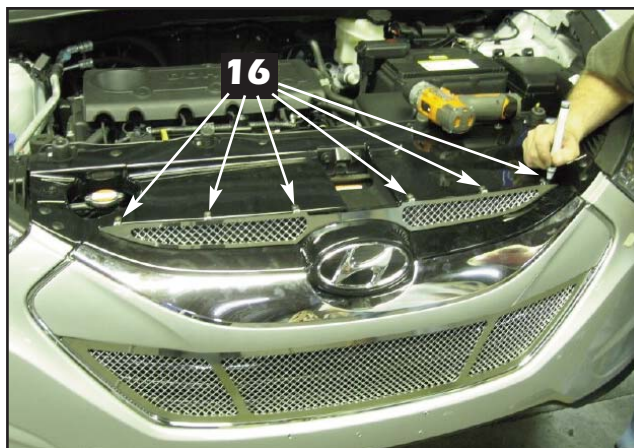
15. Carefully remove the protective masking tape from around the grille opening. The tape could get caught under the grille. If it does, lift up slightly on the grille while removing the tape.



16. Reinstall the factory upper grille removed in **Step 4** (limited shown, GLS similar).



15. Install the mesh grille sections to the back of the upper surround using the supplied double faced tape (not shown). Align the upper mesh grille assembly into place, making sure it is perfectly centered and tight against the factory grille. Use a 7/64" drill bit to drill through the center of the holes in the **mounting tabs**. Once the holes are drilled, remove the grille and blow out any plastic shavings that would get caught behind the **mesh grille**.



16. Using a black paint marker, black out the upper six (6) mounting tabs to conceal them once the grille is installed.



17. Peel off the protective cover from the stainless steel surrounds. Thoroughly clean the grilles to finish the installation. **CAUTION!** Be careful while cleaning as the edges of the stainless steel can be very sharp.

18. Finished Installation (Limited shown, GLS similar).

WARRANTY INFORMATION:

E&G Classics, Inc. warrants its chrome parts and products to be free from defects in material, workmanship or finish for Twenty-Four (24) months from the date of shipment by E&G. This warranty is limited to the repair or replacement, at E&G Classics option, of the defective part or product.

To obtain performance under this warranty you must:

- 1.) Present your E&G unit to an authorized distributor in your area with proof of purchase.
- 2.) If no distributor is available, contact E&G Classics (address below) for authorization to return unit.
- 3.) Returns - All unauthorized returns will be refused. Merchandise approved by E&G for return must have been purchased within the Twenty-Four (24) months. All returns require an authorization number obtained from E&G and the actual return must be accompanied by the written authorization form filled out completely. All merchandise must be inspected upon receipt and shortages reported within 48 hours. All merchandise must be in a resalable condition. Merchandise must be packed carefully in the original packing. If original packing is no longer usable, repack item(s) comparable to original manner. All returns are subject to a 25% handling charge. Special order items are not returnable. Defective merchandise must have an explanation of the problem. No credit will be issued unless invoice number and date of purchase has been supplied. Manufacturer shall be sole judge of defects in a product.
- 4.) UPS accounts - All returns must be prepaid. Do not send return shipments freight collect. Once E&G has made its decision and it is a claim against our warranty policy, E&G will credit incoming freight on damaged parts.
- 5.) No discontinued part or parts changed due to body style are returnable.

**For Return Authorization, write or telephone: E&G Classics, Inc., 8910 McGaw Court, Columbia, MD 21045 (410) 381-4900
Attn.: Return Department**

You are responsible for inspecting all packages containing E&G Classics' parts and product immediately upon their receipt and must file a claim with the carrier for any damage disclosure by such inspection and notify E&G classics in writing at the above address of any such damage. This warranty does not extend to any of our products which have been subject to misuse, neglect, accident or have been altered or repaired in any way. This warranty does not cover any accidental or consequential damages for any breach of this warranty agreement. E&G Classics shall have no responsibility for any loss of time, inconvenience, commercial loss or consequential damage, nor shall E&G be liable for any injury or damage to persons or property by reason of any defect in material, workmanship or finish of its parts or products. This warranty gives you specific legal rights and you may also have other rights which may vary from state to state.