

IMPORTANT: PLEASE RETAIN THIS INSTRUCTION MANUAL FOR FUTURE REFERENCE



2010 Hyundai Santa Fe Mesh Grille Installation Instructions

H 19 H0 R

Notes to the Technician:

E&G is proud to present this package to you and reminds you that for technical information, contact Lynn Eash or Lee Clary at 410-381-4900. Do not attempt installation any E&G product without first reading the detailed instructions. E&G Classics will not warrant damaged parts or vehicle due to altered installation instructions.

Copyright © 2010 by E&G Classics, Inc.

All right reserved. The reproduction or utilization of this work in any form or any electronic, mechanical, or other means, no known or hereafter invented, including xerography, photocopying, and recording, and in any information storage retrieval system is forbidden without written permission of owners.



Mesh Grille Part # 1296-0102-10

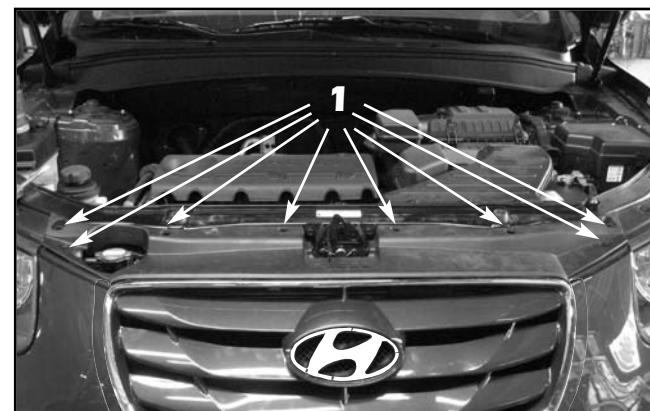
Quantity	Description	Part No.
1	Upper Mesh Grille (includes):	*****
	Chrome Plated S.S. Mesh Insert	1296-0020-10
	12 Gage Stainless Steel Surround	1296-0034-10
	(2) Black Rectangular Mesh Retainers	1099-0167-05
	(11) #8-32 ESNA Half Nuts	1999-0065-00
	Top Mounting Plate	1296-0210-10
	Lower Mesh Retainer w/Pins	1296-0042-10
	Small "E&G Classics" Emblem	1999-0268-00
1	Lower Mesh Grille Surround	1296-0022-10
1	Lower Mesh Grille Section	1296-0021-10
1	Hardware Kit (components listed below)	1296-1902-10
	(1) Emblem Mounting Plate	1296-0158-10
	(5') .045" x .250" Double Faced Tape	3004-9250-92
	(2) 7/8" x 1/4" x .062" Black Nylon Washers	1999-9601-00
	(2) #8-32 ESNA Half Nuts	1999-0065-00
	Upper Grille Hole Location Template	1296-0039-10
	(5) #8 x 3/8" Black Truss Head Screws	1999-9574-00
	(2) #8 x 3/4" Black Cap Plugs	1999-0119-00
	(2) 1.006" x .189" x .062" Black Plastic Washers	1999-0264-00

Upper Mesh Grille Part # 1296-010U-10

Quantity	Description	Part No.
1	Upper Mesh Grille (includes):	*****
	Chrome Plated S.S. Mesh Insert	1296-0020-10
	12 Gage Stainless Steel Surround	1296-0034-10
	(2) Black Rectangular Mesh Retainers	1099-0167-05
	(11) #8-32 ESNA Half Nuts	1999-0065-00
	Top Mounting Plate	1296-0210-10
	Lower Mesh Retainer w/Pins	1296-0042-10
	Small "E&G Classics" Emblem	1999-0268-00
1	Hardware Kit (components listed below)	1296-1903-10
	(1) Emblem Mounting Plate	1296-0158-10
	(2) 7/8" x 1/4" x .062" Black Nylon Washers	1999-9601-00
	Upper Grille Hole Location Template	1296-0039-10
	(5) #8 x 3/8" Black Truss Head Screws	1999-9574-00

Lower Mesh Grille Part # 1296-010L-10

Quantity	Description	Part No.
1	Lower Mesh Grille Surround	1296-0022-10
1	Lower Mesh Grille Section	1296-0021-10
1	Hardware Kit (components listed below)	1296-1905-10
	(5') .045" x .250" Double Faced Tape	3004-9250-92
	(2) #8-32 ESNA Half Nuts	1999-0065-00
	(2) #8 x 3/4" Black Cap Plugs	1999-0119-00
	(2) 1.006" x .189" x .062" Black Plastic Washers	1999-0264-00



1. Open the hood and remove the radiator support panel (remove the 10mm hex head bolts, the plastic threaded fasteners and unclip the front edge of the panel from the chrome surround of the factory grille).

Important information before you begin:

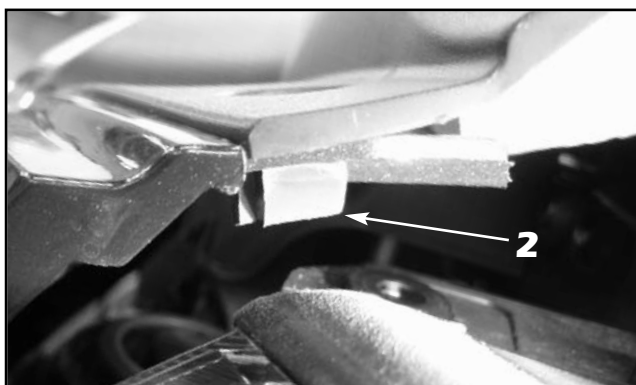
This E&G grille installation kit includes grille hole location template(s) to drill mounting holes in the vehicle.

Before marking or drilling any holes into the vehicle, you **MUST** verify that the template(s) provided in this kit match the mounting pin locations on the grille(s).

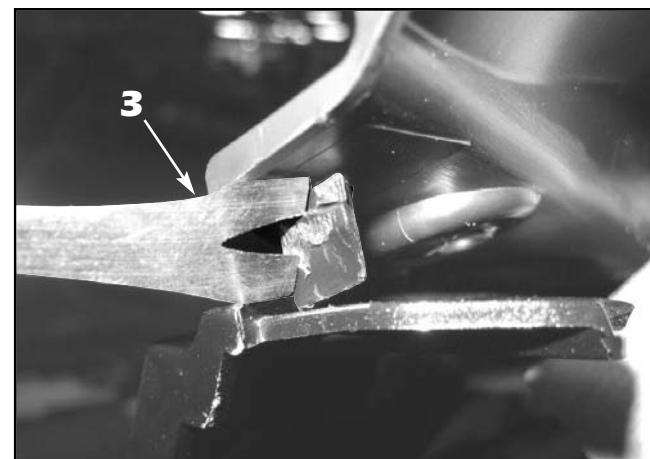
Please place the assembled grille's mounting pins over the template(s) provided and make sure that the pin and hole locations are the same. If they do not match, please call:

*** 1-410-381-4900 ***

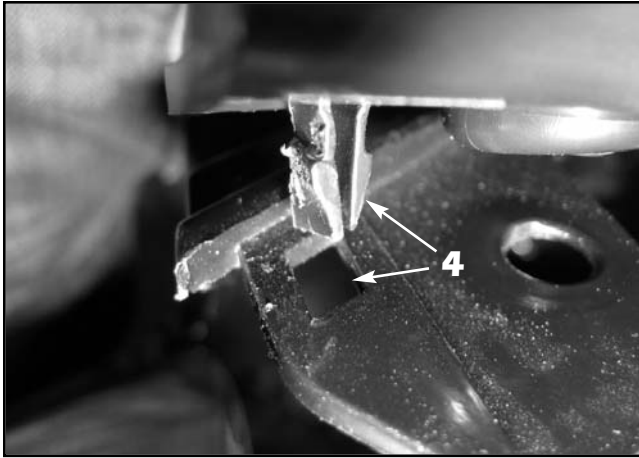
and ask for technical assistance. Thank you.



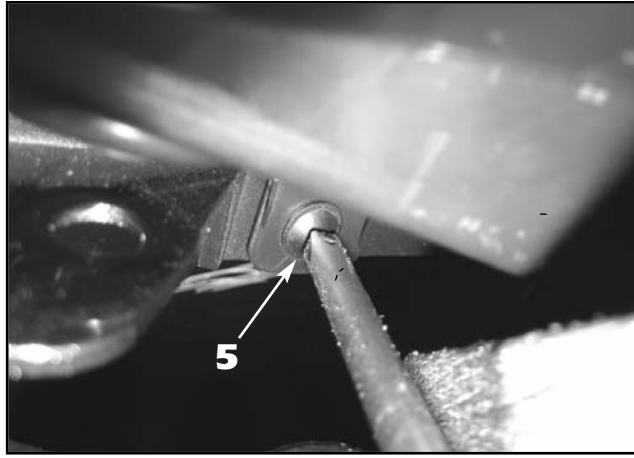
2. Pull the radiator support cover and grille forward on the corners to expose the out mounting tabs (one per side).



3. Use a flat blade screwdriver or a small clip tool and insert it between the radiator support panel and the painted bumper cover and twist, popping the tab out of the slot.



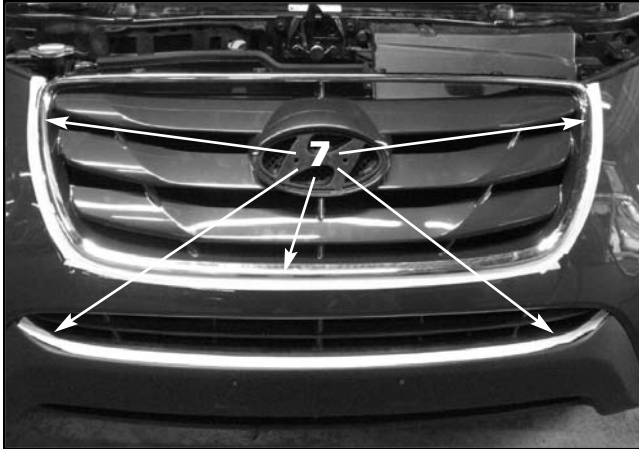
4. Once the clips have released, the top outer corners can be pulled up to expose the mounting screws under the front edge of the radiator support panel cover.



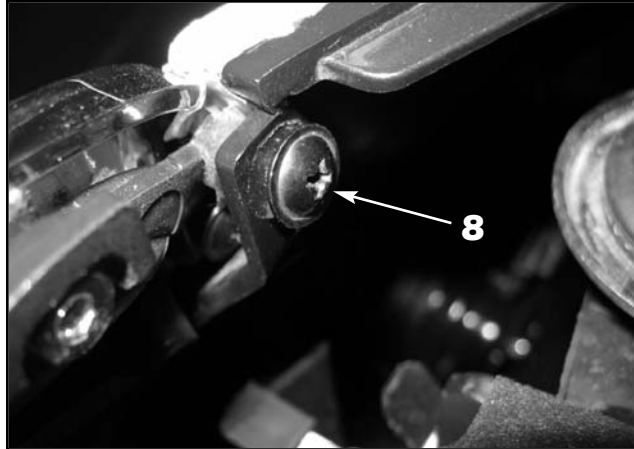
5. Remove the 8 (eight) factory phillips screws retaining the front edge of the radiator support panel to the factory grille.



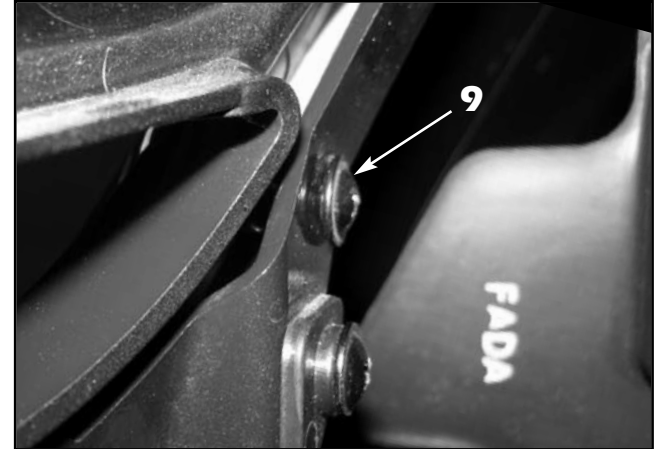
6. Once all the screws have been removed, lift up and push back on the radiator support panel, lift the front edge up so that the screw tabs clear the top of the grille and pull the panel out toward you to remove (save for reinstallation).



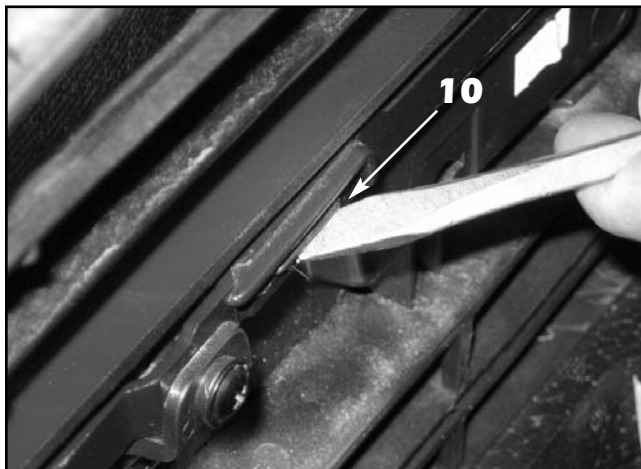
7. Carefully apply several layers of masking tape around the upper and center grille openings. This will protect the painted surface of the bumper cover during the E&G grille installation.



8. Use a #2 phillips bit on a ratcheting tool to remove the upper outer phillips screws.



9. Use a #2 phillips bit on a ratcheting tool to remove the lower phillips screws.



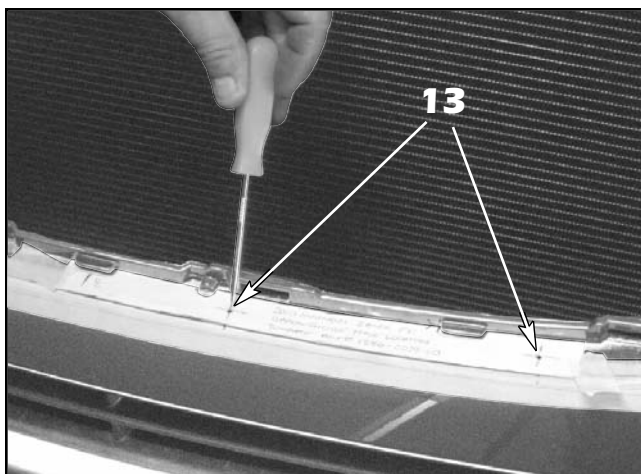
10. Use a flat blade screwdriver to unclip the bottom edge of the factory grille.



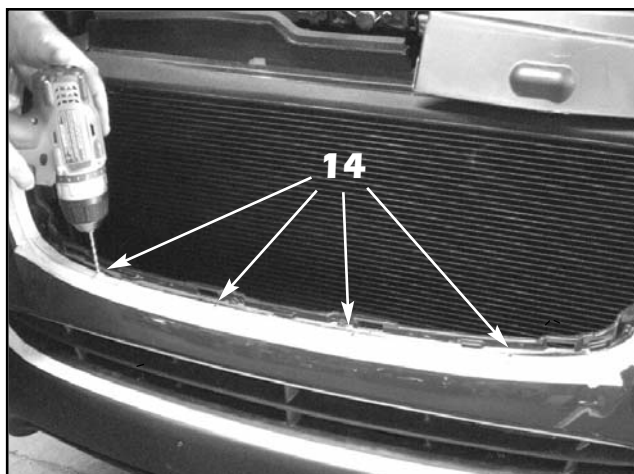
11. Once the clips have released, pull the grille straight out from the bumper cover.



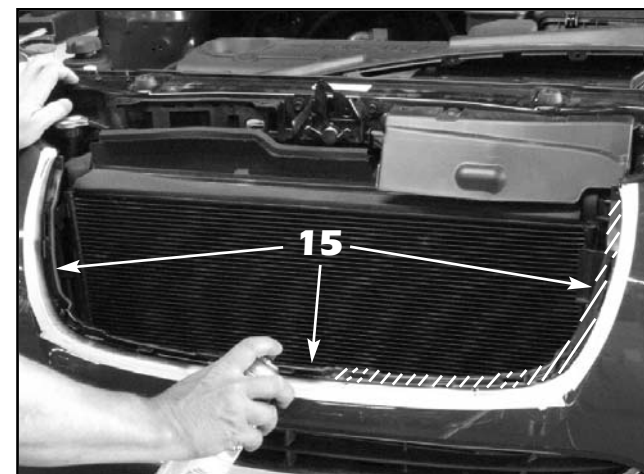
12. Remove the factory push on retainers from the back of the factory emblem using a flat blade screwdriver and remove the emblem. Save the emblem for reinstallation onto the mesh grille.



13. Cut out and align the supplied **upper grille hole location template** into place, making sure it is properly aligned with the bumper cover and use masking tape to hold it in place. Use an awl or similar pointed tool to mark the hole locations on the **template** onto the bumper cover. Untape the **template**, flip it over and mark the holes on the opposite side.

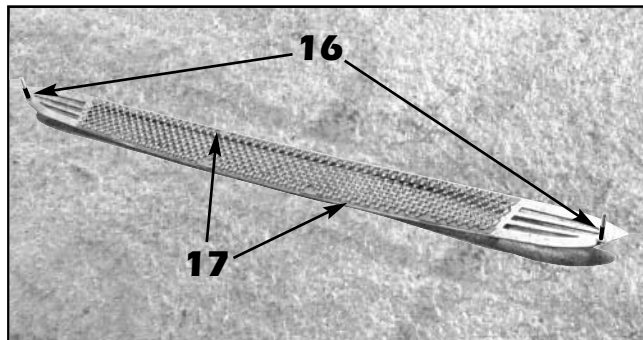


14. Use a .125" (1/8") drill bit to drill through the marks made in the previous step. Use the drill bit to connect the holes, creating mounting "slots" in the bumper cover for slight left to right grille adjustments.

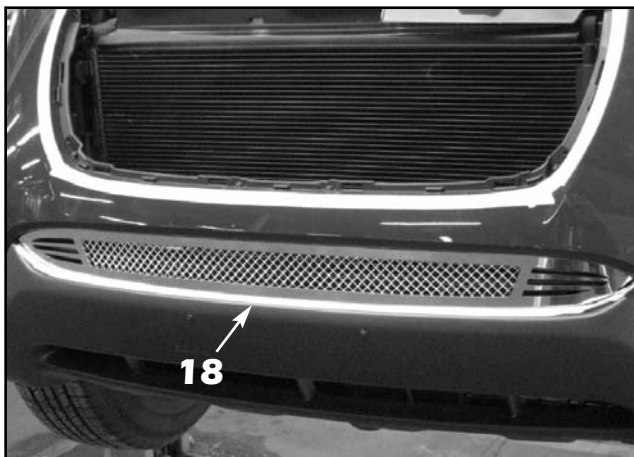


15. **For vehicles painted colors other than black or dark colors:** The cross-hatching in the above photo indicates where you need to paint with flat or semi-gloss black paint. You must also use flat or semi-gloss black paint on anything inside the upper grille opening that could be seen through the installed mesh grille.

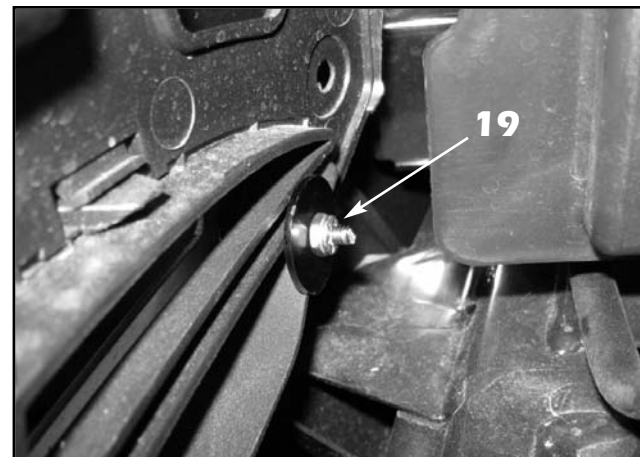
IMPORTANT! The exposed edges of the stainless steel grille and mesh can be extremely sharp. Please handle with care.



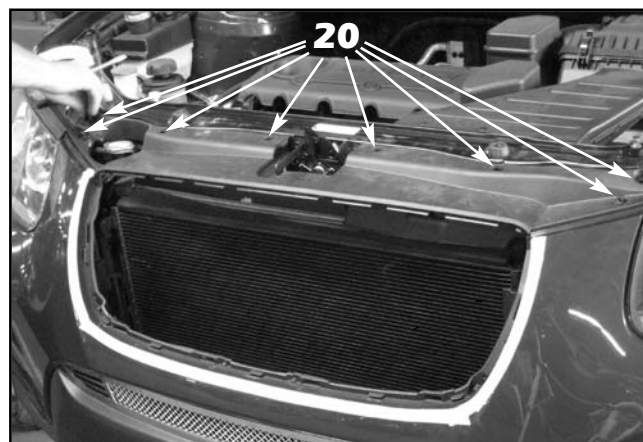
16. Trim the closed ends from the supplied **black cap plugs** and push them down over the **lower surround** mounting studs.
17. Install the supplied **.045" x .250" double faced tape** to the back of the **lower surround**, peel off the protective covering, align the **lower mesh section** into place and push firmly into place to set the tape.



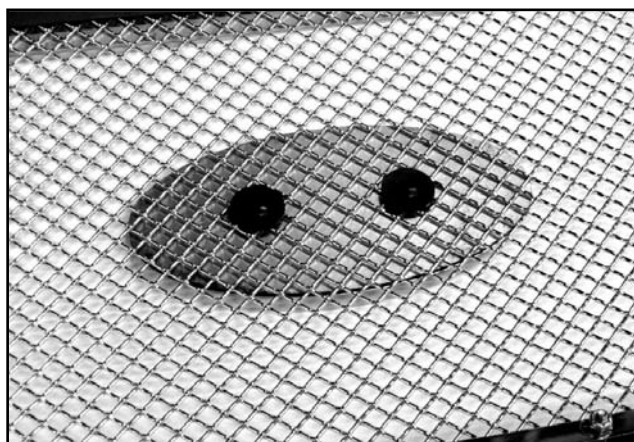
18. Remove the front tag bracket if equipped, and align the **lower mesh grille** into center opening in the bumper cover.



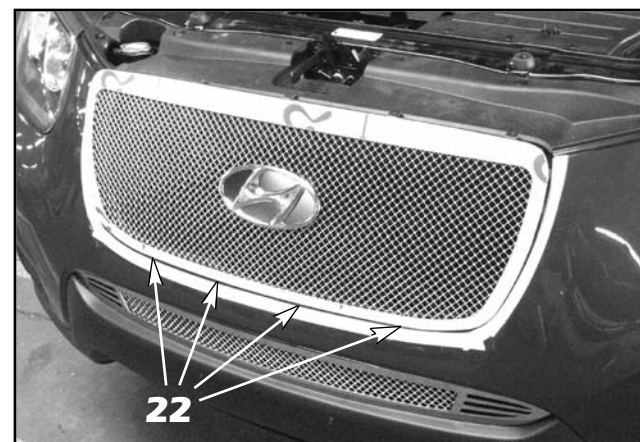
19. Push the grille firmly against the factory grille insert and install the supplied **1.006" x .189" x .062" black plastic washers** and **#8-32 ESNA half nuts** to secure the lower portion of the grille. Once the grille is tight, remove the masking tape from around the lower grille.



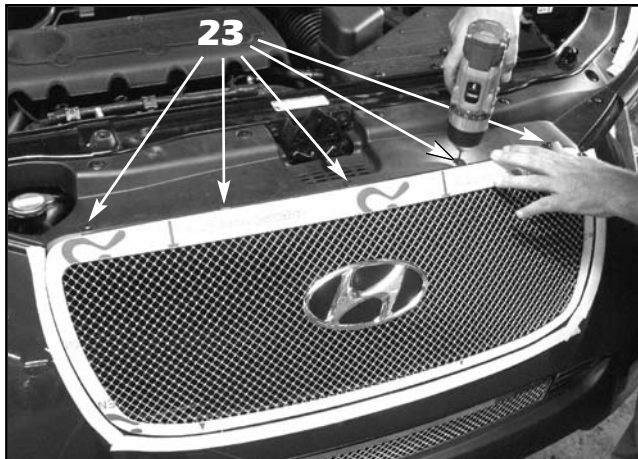
20. Reinstall the factory radiator support panel cover removed in **Steps 1 thru 6**.



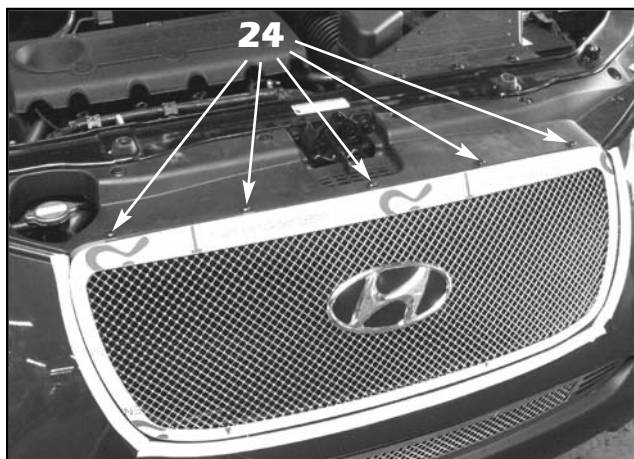
12. Align the **emblem backing plate** behind the factory emblem removed in **Step 12**. Press the studs through the holes in the plate, then center the emblem assembly onto the **mesh grille** and press the factory studs through the wire mesh (this is a tight fit but the studs will fit through the wire mesh). Align the **7/8" x 1/4" x .062" black plastic washers** and install the **#8 x 3/8" black truss head screws** to hold the emblem assembly onto the mesh section.



22. Align the **upper mesh grille** onto the bumper cover, making sure the **lower mounting pins** fit into the slots drilled in **Step 9**.



23. Push the **grille** back until it is tight against the radiator support panel cover, then use a 3/32" drill bit to drill a pilot hole through the centers of the holes in the **top mounting plate**.



24. Install the supplied **#8 x 3/8" black truss head screws** through the holes drilled in the previous step.



25. Thoroughly clean the grilles once you are finished the installation. **CAUTION!** Be careful while cleaning as the **edges of the stainless steel can be very sharp**. Peel off the protective covering from the grille surrounds and use a mild solvent and a **clean, soft cloth** to remove any tape residue. Use glass cleaner or alcohol and a **soft, clean cloth** to remove any solvent residue.

26. Reinstall the front license plate bracket (if equipped).

WARRANTY INFORMATION:

E&G Classics, Inc. warrants its chrome parts and products to be free from defects in material, workmanship or finish for Twenty-Four (24) months from the date of shipment by E&G. This warranty is limited to the repair or replacement, at E&G Classics option, of the defective part or product.

To obtain performance under this warranty you must:

- 1.) Present your E&G unit to an authorized distributor in your area with proof of purchase.
- 2.) If no distributor is available, contact E&G Classics (address below) for authorization to return unit.
- 3.) Returns - All unauthorized returns will be refused. Merchandise approved by E&G for return must have been purchased within the Twenty-Four (24) months. All returns require an authorization number obtained from E&G and the actual return must be accompanied by the written authorization form filled out completely. All merchandise must be inspected upon receipt and shortages reported within 48 hours. All merchandise must be in a resalable condition. Merchandise must be packed carefully in the original packing. If original packing is no longer usable, repack item(s) comparable to original manner. All returns are subject to a 25% handling charge. Special order items are not returnable. Defective merchandise must have an explanation of the problem. No credit will be issued unless invoice number and date of purchase has been supplied. Manufacturer shall be sole judge of defects in a product.
- 4.) UPS accounts - All returns must be prepaid. Do not send return shipments freight collect. Once E&G has made its decision and it is a claim against our warranty policy, E&G will credit incoming freight on damaged parts.
- 5.) No discontinued part or parts changed due to body style are returnable.

For Return Authorization, write or telephone: E&G Classics, Inc., 8910 McGaw Court, Columbia, MD 21045 (410) 381-4900
Attn.: Return Department

You are responsible for inspecting all packages containing E&G Classics' parts and product immediately upon their receipt and must file a claim with the carrier for any damage disclosure by such inspection and notify E&G classics in writing at the above address of any such damage. This warranty does not extend to any of our products which have been subject to misuse, neglect, accident or have been altered or repaired in any way. This warranty does not cover any accidental or consequential damages for any breach of this warranty agreement. E&G Classics shall have no responsibility for any loss of time, inconvenience, commercial loss or consequential damage, nor shall E&G be liable for any injury or damage to persons or property by reason of any defect in material, workmanship or finish of its parts or products. This warranty gives you specific legal rights and you may also have other rights which may vary from state to state.