

# IMPORTANT: PLEASE RETAIN THIS INSTRUCTION MANUAL FOR FUTURE REFERENCE



## 2005-08 Toyota Tacoma Stainless Steel Mesh Grille

C 02 G7

### Notes to the Technician:

E&G is proud to present this package to you and reminds you that for technical information, contact Lynn Eash or Lee Clary at 410-381-4900. Do not attempt installation any E&G product without first reading the detailed instructions. E&G Classics will not warrant damaged parts or vehicle due to altered installation instructions.

Copyright © 2007 by E&G Classics, Inc.

All right reserved. The reproduction or utilization of this work in any form or any electronic, mechanical, or other means, no known or hereafter invented, including xerography, photocopying, and recording, and in any information storage retrieval system is forbidden without written permission of owners.



### Part #1138-0102-05

Quantity	Description	Part No.
1	Mesh Frame - Upper	1138-0038-05
1	Mesh Section - Upper	1138-0020-05
1	Right Grille Filler	1138-0036-05
1	Left Grille Filler	1138-0037-05
1	Mesh Frame - Lower	1138-0039-05
1	Mesh Section - Lower	1138-0021-05
1	Emblem Surround Frame	1138-0035-05
1	Hardware Kit (components listed below)	1138-1902-05
16	8-32 ESNA Half Nuts	1999-0065-00
8	Mounting Brackets	1138-0155-05
2	Black Rectangular Mesh Retainers	1099-0167-05B
18	.156" x 1" Vinyl Caps	1999-0241-00
8'	3/4" x .045" Double Faced Tape	3004-9247-92
6	1.006" x .189" x .062" Black Plastic Washers	1999-0264-00

**WARNING! PLEASE HANDLE WITH CARE! THE EDGES OF THE STAINLESS STEEL MESH & GRILLE MAY BE SHARP!**



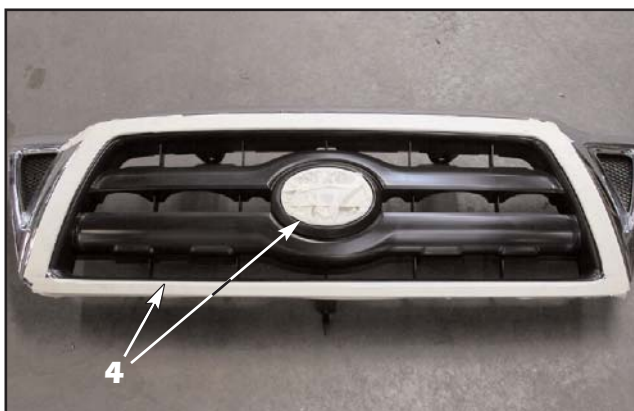
1. Open the hood and remove the two factory 10mm hex bolts retaining the center of the grille.



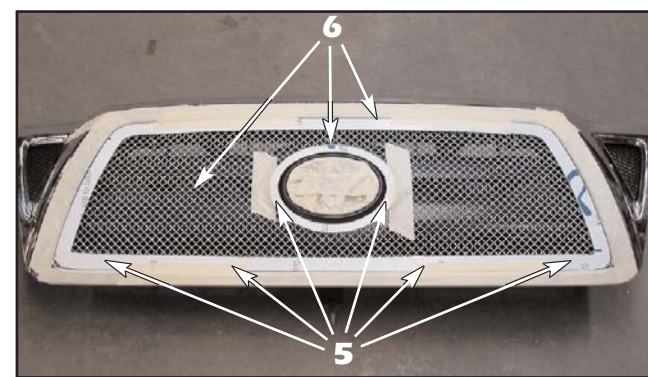
2. Remove the two factory push pins retaining the sides of the factory grille.



3. Lift straight up on the grille to release the lower clips located on the left and right sides of the factory grille.



4. Tape up the chrome or painted section of the factory grille along with the factory emblem.

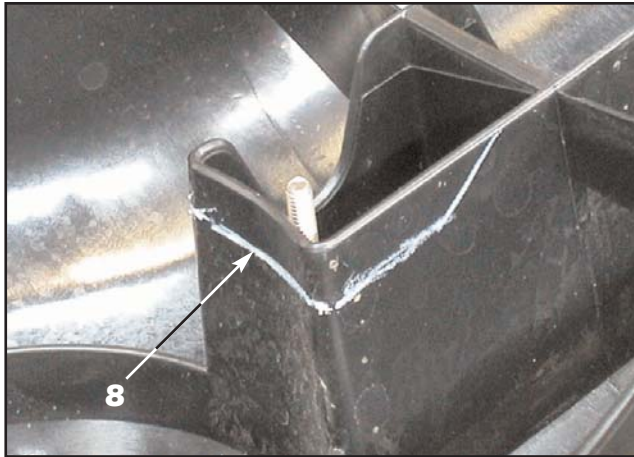


5. Trim the ends off of the supplied vinyl caps. Install two (2) vinyl caps onto each of the lower mounting studs and two (2) vinyl caps onto the emblem surround.  
6. Apply the double faced tape on the inside of the frame and align the mesh and frames over the factory grille and use masking tape to hold them in place during the following installation procedure. The double faced tape will eliminate any possible rattling.

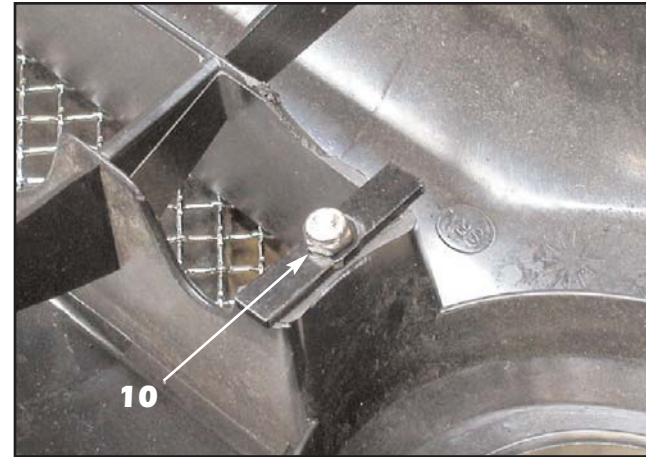




7. Turn the grille over and align the mounting brackets over the eight (8) studs welded to the grille frame and install the supplied #8-32 ESNA half nuts. Snug the grille but do not tighten at this time. Leave the grille loose until you remove the protective masking tape installed in **Step 4**.



8. Mark the back of the factory grille 1/2" below the top of the emblem surround studs.  
9. Carefully grind down the back of the plastic grille to the marks made in **Step 7**.



10. Install the rectangular retainers onto the studs mounted on the emblem surround and install a #8-32 ESNA half nut onto each stud and tighten, making sure the emblem surround does not shift.



10. Carefully remove the masking tape by pulling it back over onto itself to minimize the chance that the tape might break. If the tape looks like it will get caught, lift up or move the grille frame from side to side for additional frame clearance.  
11. Once the tape is removed, tighten all hardware but **do not overtighten** or you will indent the frame!

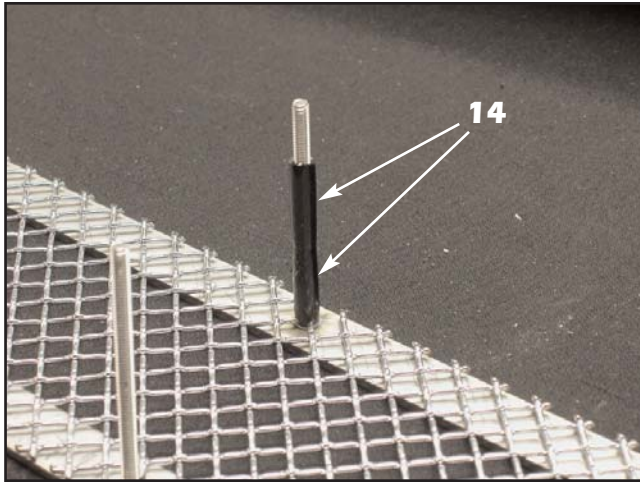


12. Drill a 1/4" hole through the center of the small left and right grille recesses (where shown). Enlarge the hole as needed until the studed grille fillers fit into the left and right grille recesses.

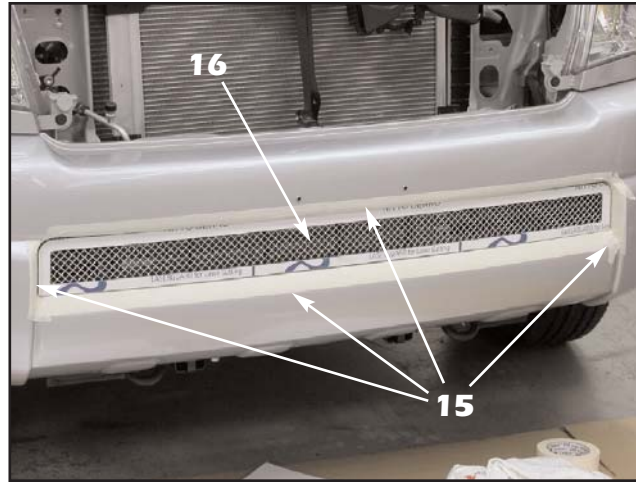


13. Turn the upper grille over and install a black plastic washer and an ESNA nut onto the protruding studs and tighten.

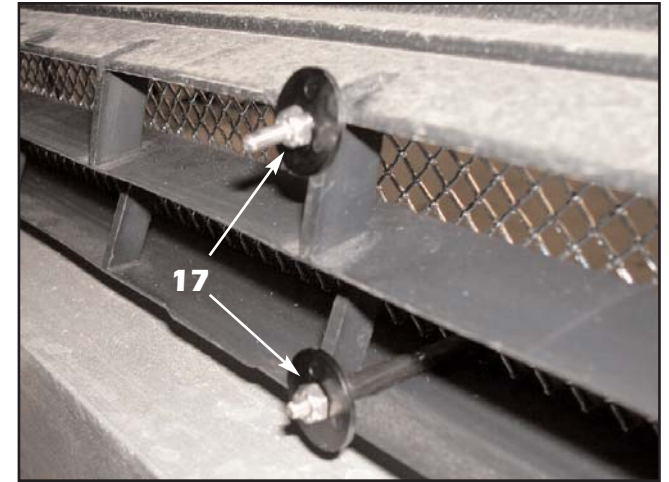




14. Trim the ends from the supplied vinyl caps and install two (2) onto the bottom center and side studs. It is not necessary to install the vinyl caps onto the top stud.



15. Apply masking tape around the lower grille opening to protect the paint.  
16. Align the lower grille mesh and frame into the factory opening, making sure that the center studs fit on opposite sides of the center vehicle stiffener.



17. Install a black plastic washer and a #8-32 ESNA half nut onto each stud and tighten. **Do not over-tighten or you will indent the stainless grille surround at the stud locations!**



18. Carefully remove the masking tape by pulling it back over onto itself to minimize the chance that the tape might break. If the tape looks like it will get caught, lift up or move the grille frame from side to side for additional frame clearance.



19. Reinstall the assembled upper grille back onto the truck, making sure that the lower clips snap into place and the upper factory hardware is reinstalled.  
20. Remove the protective covering from the stainless steel frames and use a mild solvent to remove any glue residue. Use alcohol or glass cleaner to remove any solvent residue to finish.

#### WARRANTY INFORMATION:

E&G Classics, Inc. warrants its chrome parts and products to be free from defects in material, workmanship or finish for Thirty-Six (36) months from the date of shipment by E&G. This warranty is limited to the repair or replacement, at E&G Classics option, of the defective part or product.

#### To obtain performance under this warranty you must:

- 1.) Present your E&G unit to an authorized distributor in your area with proof of purchase.
- 2.) If no distributor is available, contact E&G Classics (address below) for authorization to return unit.
- 3.) Returns - All unauthorized returns will be refused. Merchandise approved by E&G for return must have been purchased within the Thirty-Six (36) months. All returns require an authorization number obtained from E&G and the actual return must be accompanied by the written authorization form filled out completely. All merchandise must be inspected upon receipt and shortages reported within 48 hours. All merchandise must be in a resalable condition. Merchandise must be packed carefully in the original packing. If original packing is no longer usable, repack item(s) comparable to original manner. All returns are subject to a 25% handling charge. Special order items are not returnable. Defective merchandise must have an explanation of the problem. No credit will be issued unless invoice number and date of purchase has been supplied. Manufacturer shall be sole judge of defects in a product.
- 4.) UPS accounts - All returns must be prepaid. Do not send return shipments freight collect. Once E&G has made its decision and it is a claim against our warranty policy, E&G will credit incoming freight on damaged parts.
- 5.) No discontinued part or parts changed due to body style are returnable.

**For Return Authorization, write or telephone: E&G Classics, Inc., 8910 McGaw Court, Columbia, MD 21045 (410) 381-4900 Attn: Return Department.**

You are responsible for inspecting all packages containing E&G Classics' parts and product immediately upon their receipt and must file a claim with the carrier for any damage disclosure by such inspection and notify E&G classics in writing at the above address of any such damage. This warranty does not extend to any of our products which have been subject to misuse, neglect, accident or have been altered or repaired in any way. This warranty does not cover any accidental or consequential damages for any breach of this warranty agreement. E&G Classics shall have no responsibility for any loss of time, inconvenience, commercial loss or consequential damage, nor shall E&G be liable for any injury or damage to persons or property by reason of any defect in material, workmanship or finish of its parts or products. This warranty gives you specific legal rights and you may also have other rights which may vary from state to state.

**Copyright 2007 by E&G Classics, Inc.**